

HEAVY DUTY WORKBENCH
EASY ORDER GUIDE



BENEFITS OF A HEAVY DUTY WORKBENCH

Boscotek Heavy Duty Workbenches help you optimise performance in the workplace by providing efficient, multi-functional and ergonomic workspaces which significantly improve productivity, space maximisation and produce a safer working environment.

Tailor your Workbench to your needs while providing greater versatility than conventional benches. Whether you choose stationary or mobile, or choose from our extensive selection of flexible accessories, you can design a workbench that exactly suits your requirements.

The Heavy Duty Workbench is a complete system, taking the advantages of our Modular and Industrial Workbenches and combining them to offer a superior quality and competitively priced workbench capable of a **1 tonne load capacity** (not on castors).



1	Feature	Laminated timber
		The workbench work top is arguably the most important feature of any workbench. The heavy duty workbench comes with a 40mm thick compressed timber bench top with a 2mm laminated worksurface with black edge banding. These durable and strong bench tops resist acid, alkali and oil. The under side of the worksurface is laminated to prevent moisture absorption, warping and shedding. Alternative bench tops available on following page.
	Benefit	An ideal work surface for most applications.

2	Feature	Thick tubular frame construction
		The welded frame assembly is constructed from tubular steel and is powder coated in wedgewood blue as standard. Workbenches are delivered flat packed (unless otherwise stated).
	Benefit	Reliable and strong workspace solution.

3	Feature	Rear brace support
		The tubular steel rear brace support gives lateral rigidity to the Heavy Duty Workbench. Additional brace supports are needed to support the undershelf.
	Benefit	Lateral rigidity and additional support.

4	Feature	Accessories
		The Heavy Duty Workbench is available with a range of under bench bottom (B) and above bench top (T) accessories. Combine these codes on the following pages to complete your workbench configuration or choose your own.
	Benefit	Allows for over 1000 combinations to suit any application.

5	Feature	1 tonne static distributed load capacity
		The ideal combination of an thick tubular frame, 42mm bench top and heavy duty levelling feet have resulted in an extremely strong workbench rated with a static distributed load capacity of 1 tonne. Suitable for the most demanding industrial applications.
	Benefit	Increased weight capacity for professionals.

6	Feature	1500mm, 1800mm & 2100mm width available
		Available in 3 widths. 1500mm, 1800mm and 2100mm wide. See the configurations page for more information.
	Benefit	Gives flexibility to suit your workshop.

7	Feature	Heavy Duty large levelling feet
		The heavy duty levelling feet are extremely strong, consisting of a 80mm footprint. Soled with a dense rubber compound and allowing for 22mm of extra height adjustment. Levelling feet are supplied as standard and can be bolted to the ground easily.
	Benefit	Ensures level worksurface with high load capacity and improved stability. Can be bolted.

CHOOSE YOUR CONFIGURATION

With 4 easy steps to choose your HEAVY DUTY WORKBENCH

Step 1 Select your workbench size

900mm(h) X 1500mm(w) X 750mm(d) code **WBH.915**

900mm(h) X 1800mm(w) X 750mm(d) code **WBH.918**

900mm(h) X 2100mm(w) X 750mm(d) code **WBH.921**

Step 2 Select your bench top options

Laminated timber

42mm grey laminated compressed timber with black edge banding. These durable and strong bench tops resist acid, alkali and oil.



Oak Hardwood timber

40mm solid hardwood timber oiled top



2mm mild steel

2mm mild steel top powder coated matt black over 42mm laminated compressed timber



3mm mild steel

3mm mild steel top powder coated matt black. Suitable for welding applications



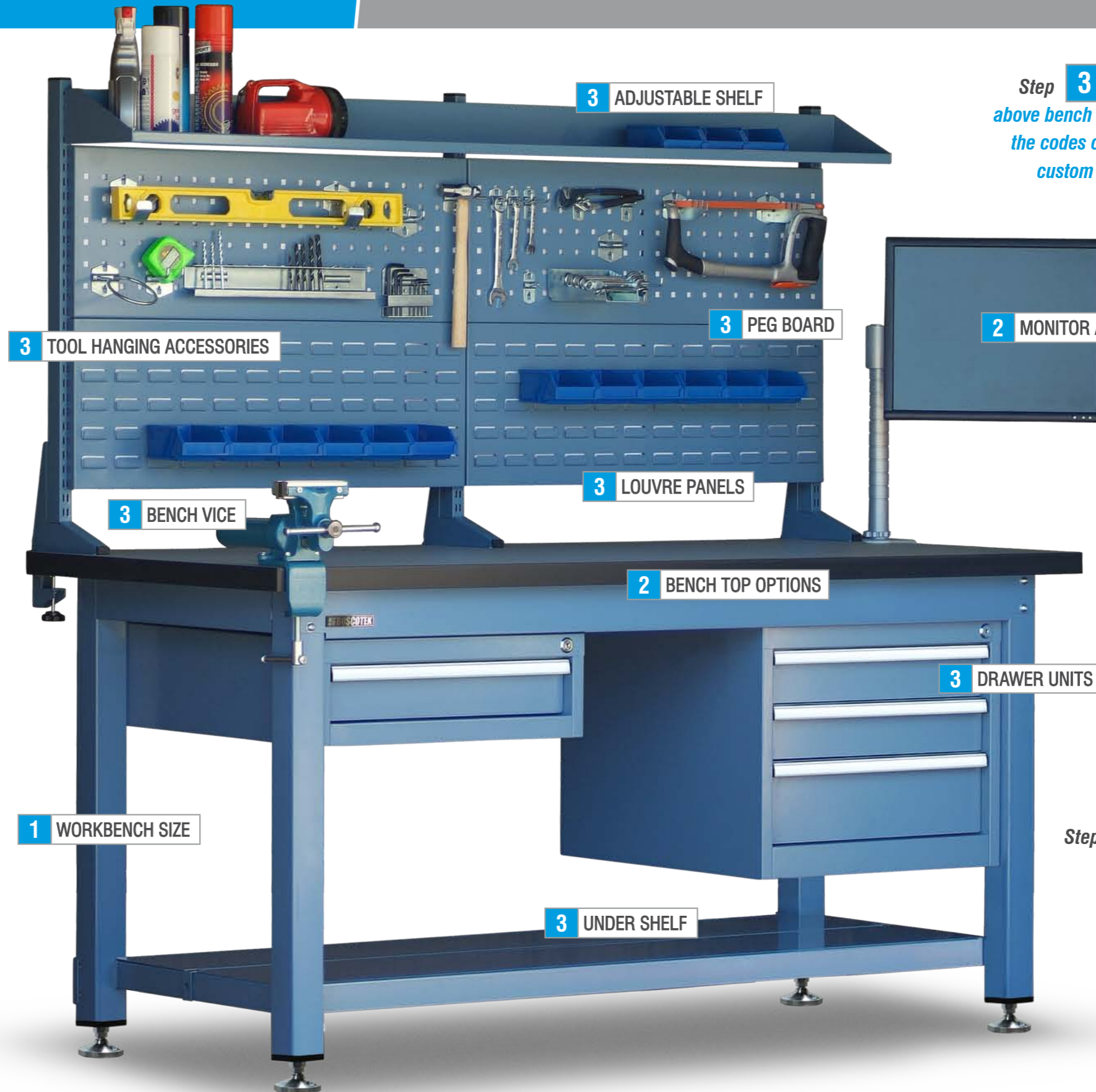
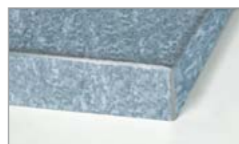
Stainless steel

1.2mm 2B/304 stainless steel top over compressed 42mm compressed timber top



Galvanised steel

1.5mm galvanised steel top over compressed 42mm timber top



Step 3 Select your under bench (B) and above bench (T) workbench configuration from the codes on the following pages or choose a custom combination from the items below

Under bench (B)

- Under shelf
- 1, 2, & 3 Drawer unit
- * 5 Drawer unit
- * Cupboard unit
- * Mobile 5 drawer unit
- * Mobile cupboard unit

Above bench (T)

- Adjustable tray shelf
- Peg board panels
- Louvre panels
- * Fixed shelf
- * Adjustable inclined shelf
- Tool hanging accessories
- Heuer bench vice
- LCD monitor arm

* = Not shown

Step 4 Select your castor option



4 CASTORS

Tubular frame, shelves and all accessories available in Boscotek light blue only

CHOOSE YOUR ACCESSORIES

Drawer units

Storage of hand tools and small parts are made easy with under bench or mobile drawer storage units and cupboards. Mounted on rails to the cross brace, the drawer units can be located anywhere along the workbench width or on the left or right side. 5 drawers units and cupboards are available as mobile and fixed. If a fixed configuration is selected an under shelf is required also.

- Available in 1,2,3 & 5 drawer and cupboard units
- Aluminium handle with label and clear plastic lens
- Key lockable with 2 two keys
- Drawer front = 75mm high on 1D, 2D & 3D
- Drawer front = 150mm high on bottom 5 drawer unit only
- Ball bearing runners. Load rating 40kg per drawer.
- Each drawer includes steel dividers and partitions
- Top drawer only on 5 drawer units comes with plastic bins
- Dual heavy duty aluminium handle on 5 drawer mobile unit and mobile cupboard unit



Lockable castors

Non marking heavy duty castors make workbenches mobile, ideal for changing workflow patterns and relocation.

- Non marking polyurethane compound
- Swivel and brake design

NB: Castors reduce weight capacity of workbench and increase workbench height by 75mm



Adjustable tray shelf

Full length adjustable tray shelves for storing smaller items and tools.

- Back support and large front lip
- Interlocking design with mounted vertical posts
- Available for 1500 1800 & 2100 workbenches



Fixed shelf

Two tier fixed shelf for storing slightly heavier items, tools and parts

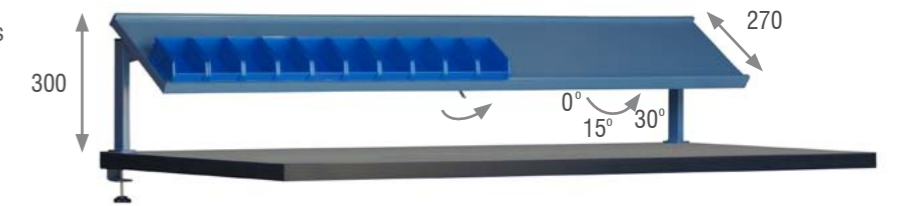
- Back and front lip for retaining items
- Side mounting bracket with 4 clamping knobs
- 40kg UDL load capacity per shelf
- Available for 1500, 1800 & 2100 workbenches



Inclined shelf

Adjustable inclined shelf makes items easier to access

- Back and front lip for retaining items
- Post mounting with 2 clamping knobs
- 20kg UDL load capacity
- Adjustable incline to 0, 15 & 30 degrees
- Available for 1500, 1800 & 2100 workbenches



Inclined shelf shown in the 30° position
Plastic bins not supplied

Louvre panel

Hanging louvre panels are a versatile addition to your workbench. Easily fitted to vertical mounting posts, louvre panels are designed to accommodate most industry standard plastic storage bins. Small parts and hardware can be quickly retrieved utilising the louvre panel system.

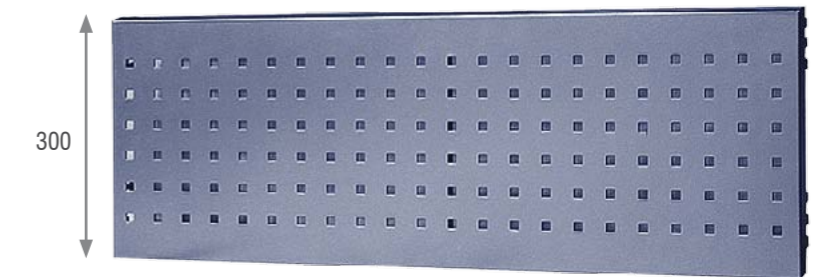
- Return folds and rear brace for additional strength
- Interlocking design with mounting vertical posts
- Easy to install and remove
- Workbenches require 2 or 3 vertical mounting posts to use this accessory depending on width



Peg boards

Hanging peg board panels allow you the flexibility to customise tools and equipment storage with the use of a large range of accessories. The square hole design allows multiple configurations to suit any requirement. Louvre panels and peg boards can be combined to create the ultimate workbench solution.

- Square hole accepts mounting accessories
- Return folds and rear brace for additional strength
- Interlocking design with vertical mounting posts
- Easy to install and remove
- Workbenches require 2 or 3 vertical mounting posts to use this accessory depending on width



Under shelf

Store large items efficiently, making full use of the workbench footprint. The under shelf is easily installed and locked into place with the additional cross braces supplied.

- Return folds for additional strength
- Load rating of 50kg per shelf
- Available in 1500, 1800 & 2100 workbenches



TOOL HANGING ACCESSORIES

Lock & Twist Tool Hooks

With the Tool Board Panel System, tools and equipment are organised and neatly stored above the work top area with the use of varying sizes of hooks, holders and hangers. The simple lock and twist design means these tool hooks can be relocated with ease.

- Zinc plated steel & plastic mount
- Large range of hooks, hangers and holders
- Lock & twist design makes using simple
- Load rated to 5kgs per hook
- Available in red ● & green ● kits or packs of 10 only. Number denotes quantity per kit.

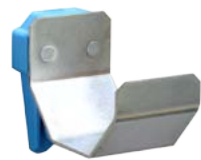


Tool hanging accessory kits

● Red is recommended for 720mm & 1440mm wide panels
44 pieces in total

● Green is recommended for 2052mm wide panel
76 pieces in total

Multi-Purpose Holder



Φ (mm)
60 ● 4 ● 2

Single Pin (100mm)



L (mm)
100 ● 8 ● 4

Spanner Holder



slots
8 ● 1 ● 1

Single Pin (25mm)



L (mm)
25 ● 6 ● 4

U Shape Holder



L(mm) W(mm)
70 25 ● 4 ● 2
23 55 ● 4 ● 2

Tool Hook



L(mm) H(mm)
25 14 ● 6 ● 4
50 14 ● 6 ● 4
100 ● 6 ● 4

Round Hook



Φ (mm)
60 ● 1
80 ● 2 ● 1

Double Hook



L(mm) W(mm)
25 35 ● 6 ● 3
50 35 ● 4 ● 2
100 35

Multi Hook



L(mm) W(mm)
138 240 ● 2 ● 1

Saw Holder



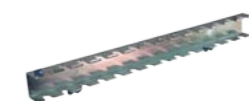
slots
4 ● 2 ● 2

Tri Hook



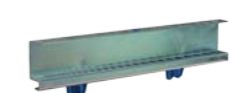
L (mm)
100 ● 2 ● 1

Screwdriver Holder



L (mm)
100 ● 1 ● 1

Drill Bit Holder



L (mm) Holes
26 ● 1 ● 1

Allen Key Holder



Holes
10 ● 2 ● 2

All Lock & Twist Tool Hooks shown above are what is available in the red kit.

CHOOSE YOUR UNDER BENCH OPTIONS

...and combine it with an above bench option (T)



B0
NO ACCESSORIES

width	code
1500mm	WBH.915.B0.T?
1800mm	WBH.918.B0.T?
2100mm	WBH.921.B0.T?



B1
1 DRAWER UNIT

width	code
1500mm	WBH.915.B1.T?
1800mm	WBH.918.B1.T?
2100mm	WBH.921.B1.T?



B8
1 DRAWER UNIT
1 DRAWER UNIT

width	code
1500mm	WBH.915.B8.T?
1800mm	WBH.918.B8.T?
2100mm	WBH.921.B8.T?



B9
1 DRAWER UNIT
2 DRAWER UNIT

width	code
1500mm	WBH.915.B9.T?
1800mm	WBH.918.B9.T?
2100mm	WBH.921.B9.T?



B2
2 DRAWER UNIT

width	code
1500mm	WBH.915.B2.T?
1800mm	WBH.918.B2.T?
2100mm	WBH.921.B2.T?



B3
3 DRAWER UNIT

width	code
1500mm	WBH.915.B3.T?
1800mm	WBH.918.B3.T?
2100mm	WBH.921.B3.T?



B10
1 DRAWER UNIT
3 DRAWER UNIT

width	code
1500mm	WBH.915.B10.T?
1800mm	WBH.918.B10.T?
2100mm	WBH.921.B10.T?



B11
3 DRAWER UNIT
2 DRAWER UNIT

width	code
1500mm	WBH.915.B11.T?
1800mm	WBH.918.B11.T?
2100mm	WBH.921.B11.T?



B4
MOBILE 5 DRAWER CABINET

width	code
1500mm	WBH.915.B4.T?
1800mm	WBH.918.B4.T?
2100mm	WBH.921.B4.T?



B5
MOBILE CUPBOARD

width	code
1500mm	WBH.915.B5.T?
1800mm	WBH.918.B5.T?
2100mm	WBH.921.B5.T?



B12
3 DRAWER UNIT
3 DRAWER UNIT

width	code
1500mm	WBH.915.B12.T?
1800mm	WBH.918.B12.T?
2100mm	WBH.921.B12.T?



B13
MOBILE 5 DRAWER CABINET
MOBILE CUPBOARD

width	code
1500mm	WBH.915.B13.T?
1800mm	WBH.918.B13.T?
2100mm	WBH.921.B13.T?



B6
MOBILE 5 DRAWER CABINET
1 DRAWER UNIT

width	code
1500mm	WBH.915.B6.T?
1800mm	WBH.918.B6.T?
2100mm	WBH.921.B6.T?



B7
MOBILE CUPBOARD
1 DRAWER UNIT

width	code
1500mm	WBH.915.B7.T?
1800mm	WBH.918.B7.T?
2100mm	WBH.921.B7.T?



B14
UNDERSHELF

width	code
1500mm	WBH.915.B14.T?
1800mm	WBH.918.B14.T?
2100mm	WBH.921.B14.T?



B15
UNDER SHELF
1 DRAWER UNIT

width	code
1500mm	WBH.915.B15.T?
1800mm	WBH.918.B15.T?
2100mm	WBH.921.B15.T?

CHOOSE YOUR UNDER BENCH OPTIONS

...and combine it with an above bench option



B16

	width	code
UNDER SHELF	1500mm	WBH.915.B16.T?
2 DRAWER UNIT	1800mm	WBH.918.B16.T?
	2100mm	WBH.921.B16.T?



B17

	width	code
UNDER SHELF	1500mm	WBH.915.B17.T?
3 DRAWER UNIT	1800mm	WBH.918.B17.T?
	2100mm	WBH.921.B17.T?



B24

	width	code
UNDER SHELF	1500mm	WBH.915.B24.T?
1 DRAWER UNIT	1800mm	WBH.918.B24.T?
CUPBOARD UNIT	2100mm	WBH.921.B24.T?



B25

	width	code
UNDER SHELF	1500mm	WBH.915.B25.T?
5 DRAWER UNIT	1800mm	WBH.918.B25.T?
CUPBOARD UNIT	2100mm	WBH.921.B25.T?



B18

	width	code
UNDER SHELF	1500mm	WBH.915.B18.T?
1 DRAWER UNIT	1800mm	WBH.918.B18.T?
1 DRAWER UNIT	2100mm	WBH.921.B18.T?



B19

	width	code
UNDER SHELF	1500mm	WBH.915.B19.T?
1 DRAWER UNIT	1800mm	WBH.918.B19.T?
2 DRAWER UNIT	2100mm	WBH.921.B19.T?



B26

	width	code
UNDER SHELF	1500mm	WBH.915.B26.T?
5 DRAWER UNIT	1800mm	WBH.918.B26.T?
5 DRAWER UNIT	2100mm	WBH.921.B26.T?



B27

	width	code
UNDER SHELF	1500mm	WBH.915.B27.T?
CUPBOARD UNIT	1800mm	WBH.918.B27.T?
CUPBOARD UNIT	2100mm	WBH.921.B27.T?



B20

	width	code
UNDER SHELF	1500mm	WBH.915.B20.T?
1 DRAWER UNIT	1800mm	WBH.918.B20.T?
3 DRAWER UNIT	2100mm	WBH.921.B20.T?



B21

	width	code
UNDER SHELF	1500mm	WBH.915.B21.T?
5 DRAWER UNIT	1800mm	WBH.918.B21.T?
	2100mm	WBH.921.B21.T?



B22

	width	code
UNDER SHELF	1500mm	WBH.915.B22.T?
1 DRAWER UNIT	1800mm	WBH.918.B22.T?
5 DRAWER UNIT	2100mm	WBH.921.B22.T?



B23

	width	code
UNDER SHELF	1500mm	WBH.915.B23.T?
CUPBOARD UNIT	1800mm	WBH.918.B23.T?
	2100mm	WBH.921.B23.T?



B28

	width	code
MOBILE 5 DRAWER CABINET	1500mm	WBH.915.B28.T?
MOBILE 5 DRAWER CABINET	1800mm	WBH.918.B28.T?
	2100mm	WBH.921.B28.T?

CHOOSE YOUR ABOVE BENCH OPTIONS

and combine it with your choice of under bench (B) options to complete your configuration



T0

	width	code
NO ACCESSORIES	1500mm	WBH.915.B?.T0
	1800mm	WBH.918.B?.T0
	2100mm	WBH.921.B?.T0



T1

	width	code
3 x VERTICAL MOUNTING POSTS	1500mm	WBH.915.B?.T1
3 x ADJUSTABLE SHELF TRAYS	1800mm	WBH.918.B?.T1
	2100mm	WBH.921.B?.T1



T8

	width	code
3 x VERTICAL MOUNTING POSTS	1500mm	WBH.915.B?.T8
1 x ADJUSTABLE SHELF TRAY	1800mm	WBH.918.B?.T8
2 x PEG BOARDS & 2 LOUVRE PANELS	2100mm	WBH.921.B?.T8



T9

	width	code
FIXED SHELF	1500mm	WBH.915.B?.T9
	1800mm	WBH.918.B?.T9
	2100mm	WBH.921.B?.T9



T2

	width	code
3 x VERTICAL MOUNTING POSTS	1500mm	WBH.915.B?.T2
4 x ADJUSTABLE SHELF TRAYS	1800mm	WBH.918.B?.T2
	2100mm	WBH.921.B?.T2



T3

	width	code
3 x VERTICAL MOUNTING POSTS	1500mm	WBH.915.B?.T3
2 x ADJUSTABLE SHELF TRAYS	1800mm	WBH.918.B?.T3
2 x PEG BOARDS	2100mm	WBH.921.B?.T3



T10

	width	code
ADJUSTABLE INCLINED SHELF (PLASTIC BINS NOT SUPPLIED)	1500mm	WBH.915.B?.T10
	1800mm	WBH.918.B?.T10
	2100mm	WBH.921.B?.T10



T4

	width	code
3 x VERTICAL MOUNTING POSTS	1500mm	WBH.915.B?.T4
2 x ADJUSTABLE SHELF TRAYS	1800mm	WBH.918.B?.T4
2 x LOUVRE PANELS	2100mm	WBH.921.B?.T4



T5

	width	code
3 x VERTICAL MOUNTING POSTS	1500mm	WBH.915.B?.T5
2 x ADJUSTABLE SHELF TRAYS	1800mm	WBH.918.B?.T5
1 x PEG BOARD & 1 x LOUVRE PANEL	2100mm	WBH.921.B?.T5



T6

	width	code
3 x VERTICAL MOUNTING POSTS	1500mm	WBH.915.B?.T6
1 x ADJUSTABLE SHELF TRAY	1800mm	WBH.918.B?.T6
4 x PEG BOARDS	2100mm	WBH.921.B?.T6



T7

	width	code
3 x VERTICAL MOUNTING POSTS	1500mm	WBH.915.B?.T7
1 x ADJUSTABLE SHELF TRAY	1800mm	WBH.918.B?.T7
4 x LOUVRE PANELS	2100mm	WBH.921.B?.T7



T8

	width	code
3 x VERTICAL MOUNTING POSTS	1500mm	WBH.915.B?.T8
1 x ADJUSTABLE SHELF TRAY	1800mm	WBH.918.B?.T8
2 x PEG BOARDS & 2 LOUVRE PANELS	2100mm	WBH.921.B?.T8

OR CHOOSE A CONFIGURED WORKBENCH

...and combine it with your workbench width to complete the configuration

Workbench widths & codes : 1500mm = 915 | 1800mm = 918 | 2100mm = 921



WBH.9???.B15.T10

UNDER SHELF
1 DRAWER UNIT

ADJUSTABLE INCLINED SHELF
(PLASTIC BINS NOT SUPPLIED)



WBH.9???.B3.T9

3 DRAWER UNIT

FIXED SHELF



WBH.9???.B24.T10

UNDER SHELF
CUPBOARD UNIT
1 DRAWER UNIT

ADJUSTABLE INCLINED SHELF
(PLASTIC BINS NOT SUPPLIED)



WBH.9???.B25.T9

UNDER SHELF
CUPBOARD UNIT
5 DRAWER UNIT

FIXED SHELF



WBH.9???.B21.T1

UNDER SHELF
5 DRAWER UNIT

3 x VERTICAL MOUNTING POSTS
3 x ADJUSTABLE SHELF TRAYS



WBH.9???.B18.T8

UNDER SHELF
1 DRAWER UNIT
1 DRAWER UNIT

3 x VERTICAL MOUNTING POSTS
ADJUSTABLE SHELF TRAY
2 x PEG BOARDS & 2 x LOUVRE PANELS



WBH.9???.B6.T8

MOBILE 5 DRAWER UNIT
1 DRAWER UNIT

3 x VERTICAL MOUNTING POSTS
ADJUSTABLE SHELF TRAY
2 x PEG BOARDS & 2 x LOUVRE PANELS



WBH.9???.B21.T4

UNDER SHELF
5 DRAWER UNIT

3 x VERTICAL MOUNTING POSTS
2 x ADJUSTABLE SHELF TRAYS
2 x PEG BOARDS



WBH.9???.B15.T4

UNDER SHELF
1 DRAWER UNIT

3 x VERTICAL MOUNTING POSTS
2 x ADJUSTABLE SHELF TRAYS
2 x LOUVRE PANELS



WBH.9???.B15.T1

UNDER SHELF
1 DRAWER UNIT

3 x VERTICAL MOUNTING POSTS
3 x ADJUSTABLE SHELF TRAYS



WBH.9???.B13.T8

MOBILE 5 DRAWER UNIT
MOBILE CUPBOARD

3 x VERTICAL MOUNTING POSTS
ADJUSTABLE SHELF TRAY
2 x PEG BOARDS & 2 x LOUVRE



WBH.9???.B25.T8

UNDER SHELF
CUPBOARD UNIT
5 DRAWER UNIT

3 x VERTICAL MOUNTING POSTS
ADJUSTABLE SHELF TRAY
2 x PEG BOARDS & 2 x LOUVRE

OR CHOOSE A CONFIGURED WORKBENCH

...and combine it with your workbench width to complete the configuration

Workbench widths & codes : 1500mm = 915 | 1800mm = 918 | 2100mm = 921



WBH.9???.B25.T10

UNDER SHELF CUPBOARD UNIT
5 DRAWER UNIT | ADJUSTABLE INCLINED SHELF
(PLASTIC BINS NOT SUPPLIED)



WBH.9???.B13.T10

MOBILE 5 DRAWER UNIT | MOBILE CUPBOARD | ADJUSTABLE INCLINED SHELF



WBH.9???.B24.T9

UNDER SHELF CUPBOARD UNIT
1 DRAWER UNIT | FIXED SHELF



WBH.9???.B15.T9

UNDER SHELF 1 DRAWER UNIT | FIXED SHELF



WBH.9???.B3.T3

3 DRAWER UNIT | 3 x VERTICAL MOUNTING POSTS
2 x ADJUSTABLE SHELF TRAYS
2 x PEG BOARDS



WBH.9???.B3.T1

3 DRAWER UNIT | 3 x VERTICAL MOUNTING POSTS
3 x ADJUSTABLE SHELF TRAYS



WBH.9???.B21.T7

UNDER SHELF 5 DRAWER UNIT | 3 x VERTICAL MOUNTING POSTS
ADJUSTABLE SHELF TRAY
4 x LOUVRE PANELS



WBH.9???.B13.T3

MOBILE 5 DRAWER UNIT | MOBILE CUPBOARD | 3 x VERTICAL MOUNTING POSTS
2 x ADJUSTABLE SHELF TRAYS
2 x PEG BOARDS



WBH.9???.B3.T7

3 DRAWER UNIT | 3 x VERTICAL MOUNTING POSTS
ADJUSTABLE SHELF TRAY
4 x LOUVRE PANELS



WBH.9???.B21.T3

UNDER SHELF 5 DRAWER UNIT | 3 x VERTICAL MOUNTING POSTS
2 x ADJUSTABLE SHELF TRAYS
2 x PEG BOARDS



WBH.9???.B24.T6

UNDER SHELF CUPBOARD UNIT
1 DRAWER UNIT | 3 x VERTICAL MOUNTING POSTS
ADJUSTABLE SHELF TRAY
4 x PEG BOARDS



WBH.9???.B13.T4

MOBILE 5 DRAWER UNIT | MOBILE CUPBOARD UNIT | 3 x VERTICAL MOUNTING POSTS
2 x ADJUSTABLE SHELF TRAYS
2 x LOUVRE PANELS



A division of Advance Metal Products (Aust) Pty Ltd
ACN: 003 154 210

t: (02) 8796 6288
f: (02) 8796 6289
info@boscostorage.com.au

PO Box 5469 BC
Minto NSW 2566 Australia
www.boscotek.com.au

